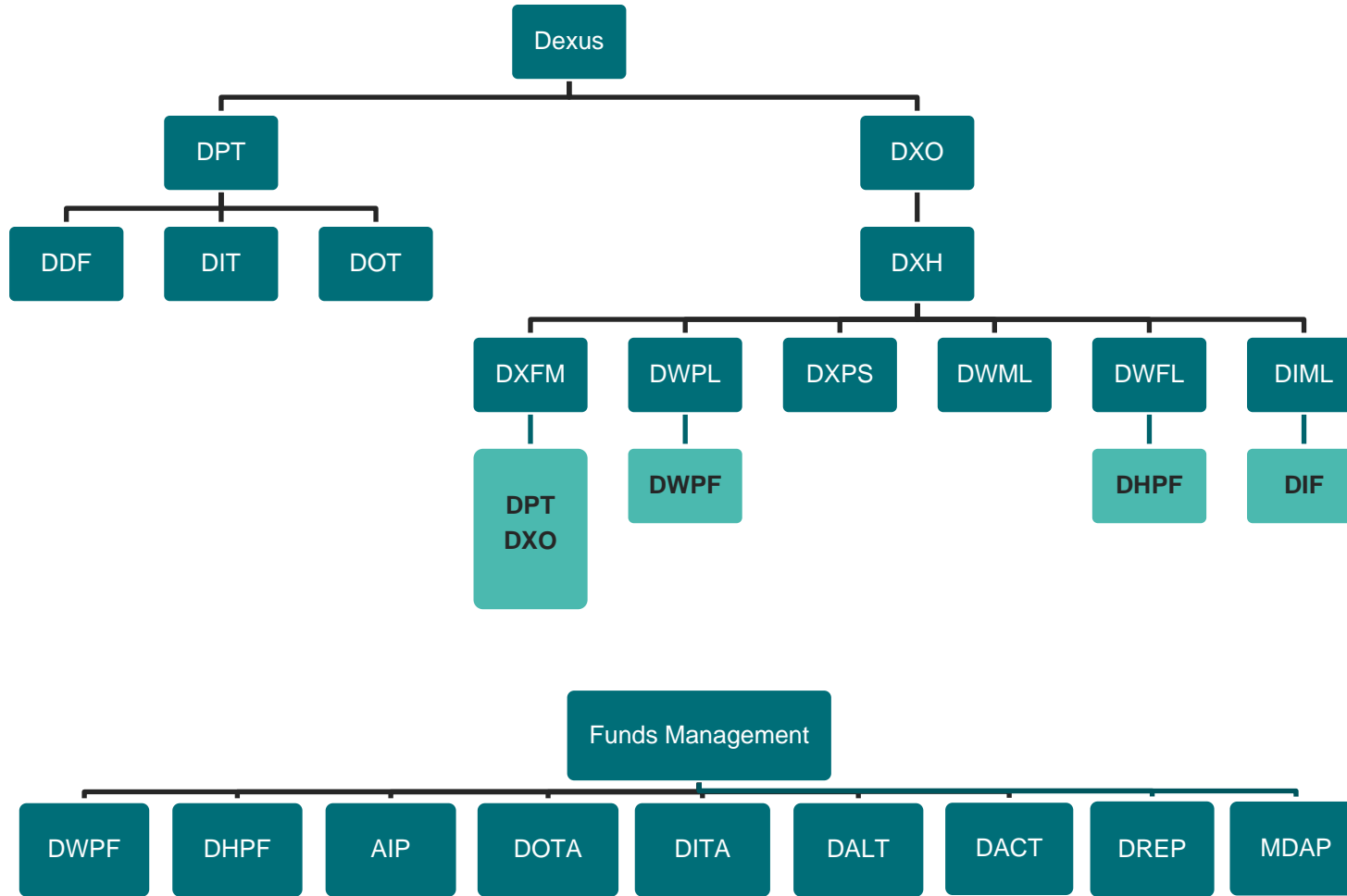


Dexus Corporate Structure



- DXH means Dexus Holdings Pty Limited
- DXFM means Dexus Funds Management Limited
- DWPL means Dexus Wholesale Property Limited
- DXPS means Dexus Property Services Pty Limited
- DWML means Dexus Wholesale Management Limited
- DWFL means Dexus Wholesale Funds Limited
- DIML means Dexus Investment Management Limited

- DXO means Dexus Operations Trust
- DPT means Dexus Property Trust
- DDF means Dexus Diversified Trust
- DIT means Dexus Industrial Trust
- DOT means Dexus Office Trust
- DWPF means Dexus Wholesale Property Fund
- DREP means Dexus Real Estate Partnership
- DHPF means Dexus Healthcare Property Fund
- DIF means Dexus Industrial Fund
- AIP means Australian Industrial Partnership
- DOTA means Dexus Office Trust Australia
- DITA means Dexus Industrial Trust Australia
- DALT means Dexus Australian Logistics Trust
- DACT means Dexus Australian Commercial Trust
- MDAP means Mercatus Dexus Australia Partnership