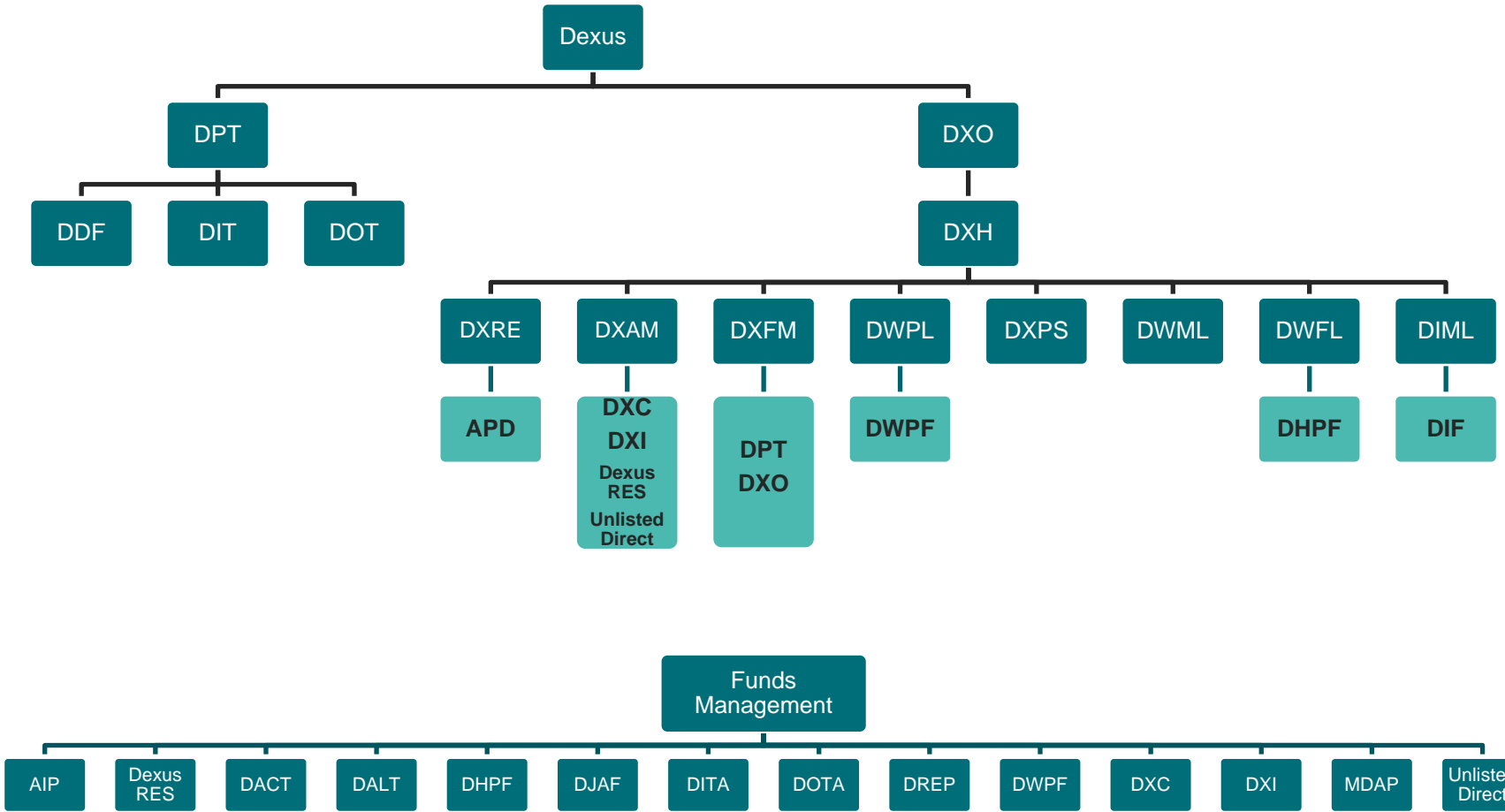


Dexus Corporate Structure

High Level Indicative Structure Diagram



- DXRE means Dexus RE Limited
- DXAM means Dexus Asset Management Limited
- DXH means Dexus Holdings Pty Limited
- DXFM means Dexus Funds Management Limited
- DWPL means Dexus Wholesale Property Limited
- DXPS means Dexus Property Services Pty Limited
- DWML means Dexus Wholesale Management Limited
- DWFL means Dexus Wholesale Funds Limited
- DIML means Dexus Investment Management Limited

- DPT means Dexus Property Trust
- DXO means Dexus Operations Trust
- DDF means Dexus Diversified Trust
- DIT means Dexus Industrial Trust
- DOT means Dexus Office Trust
- APD means APD Trust
- DXC means Dexus Convenience Retail REIT
- DXI means Dexus Industria REIT
- DWPF means Dexus Wholesale Property Fund (includes Dexus ADPF)
- DHPF means Dexus Healthcare Property Fund
- DIF means Dexus Industrial Fund
- DJAF means Dexus Jandakot Airport Fund

- AIP means Australian Industrial Partnership
- Dexus RES means Dexus Real Estate Securities Funds (includes DXAF, DXARF, DXGRF, DPFIF & DPFIF2)
- DACT means Dexus Australian Commercial Trust
- DALT means Dexus Australian Logistics Trust
- DITA means Dexus Industrial Trust Australia
- DOTA means Dexus Office Trust Australia
- DREP means Dexus Real Estate Partnership
- MDAP means Mercatus Dexus Australia Partnership
- Unlisted Direct means Unlisted Direct Funds (includes DDF2 and DRPF)