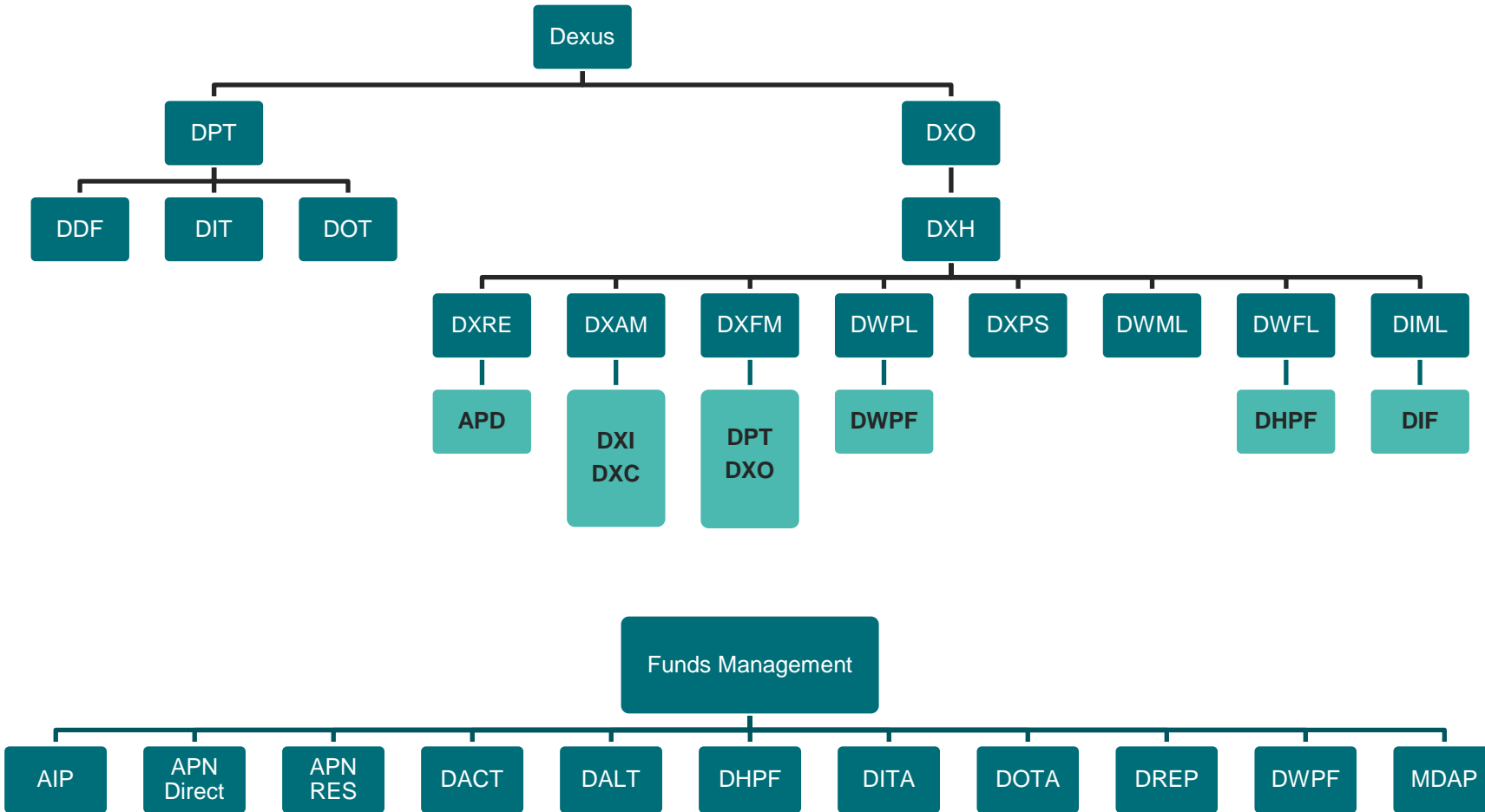


# Dexus Corporate Structure

## High Level Indicative Structure Diagram



- DXRE means Dexus RE Limited
- DXAM means Dexus Asset Management Limited
- DXH means Dexus Holdings Pty Limited
- DXFM means Dexus Funds Management Limited
- DWPL means Dexus Wholesale Property Limited
- DXPS means Dexus Property Services Pty Limited
- DWML means Dexus Wholesale Management Limited
- DWFL means Dexus Wholesale Funds Limited
- DIML means Dexus Investment Management Limited
  
- DPT means Dexus Property Trust
- DXO means Dexus Operations Trust
- DDF means Dexus Diversified Trust
- DIT means Dexus Industrial Trust
- DOT means Dexus Office Trust
- APD means APD Trust
- DXC means Dexus Convenience Retail REIT
- DXI means Dexus Industria REIT
- DWPF means Dexus Wholesale Property Fund
- DHPF means Dexus Healthcare Property Fund
- DIF means Dexus Industrial Fund
  
- AIP means Australian Industrial Partnership
- APN Direct means APN Direct Funds
- APN RES means APN Real Estate Securities Funds
- DACT means Dexus Australian Commercial Trust
- DALT means Dexus Australian Logistics Trust
- DITA means Dexus Industrial Trust Australia
- DOTA means Dexus Office Trust Australia
- DREP means Dexus Real Estate Partnership
- MDAP means Mercatus Dexus Australia Partnership